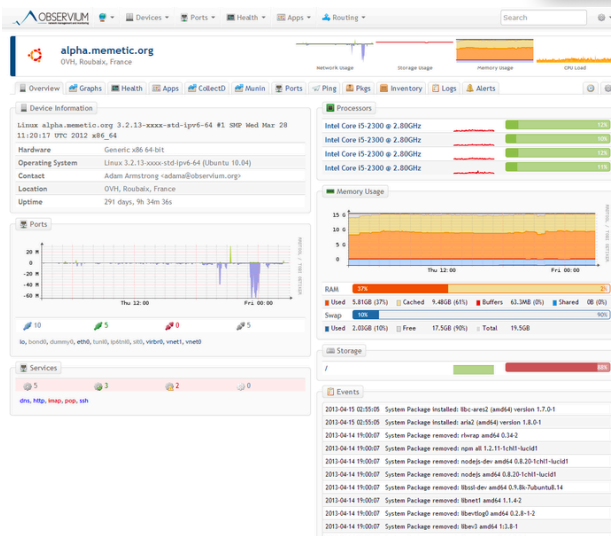
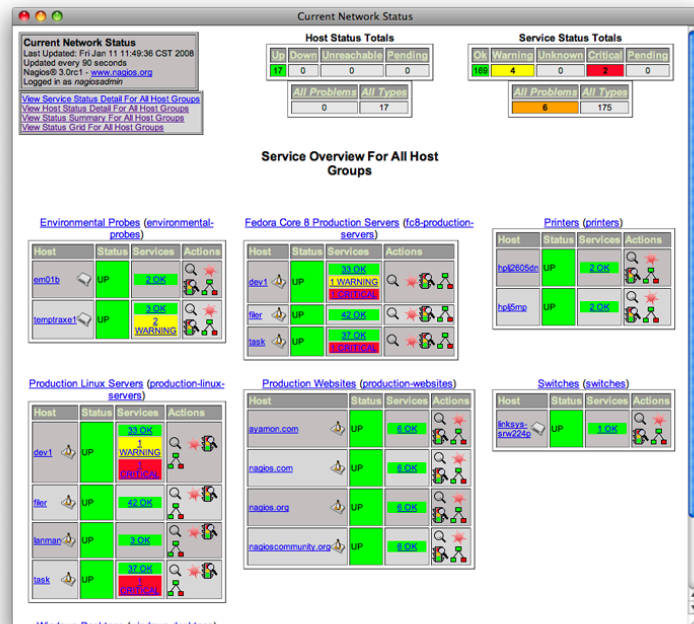


What is RPM?

Many IT support firms will be available when you call with a problem, but how many are proactively monitoring your equipment, and notifying you with impending issues.

RPM (**R**esource and **P**erformance **M**onitoring) is a monitoring system at DigiSoy Technologies, that securely connects to your equipment and gathers health and performance data via SNMP. If you've ever questioned whether you need to upgrade your internet connection, or if you need to upgrade memory on a server, then this is the platform you need.

Resource Monitoring keeps track of CPU usage, hard drive space and any running services on servers. For networking equipment, it will let you know if an important link or connection is up, or taking excessive errors.



Performance Monitoring gives a historical view of how your devices are operating. Should I upgrade my server, or order a bigger internet connection? These are common questions asked by clients, and the only way to properly answer them is to know how your equipment is currently performing.

Why wait until a small problem has snowballed into a major disaster? Your business deserves someone who is looking after it 24x7.

NOTE: DATA MONITORED VARIES ACROSS DEVICES. SNMP ENABLED DEVICES ARE REQUIRED.